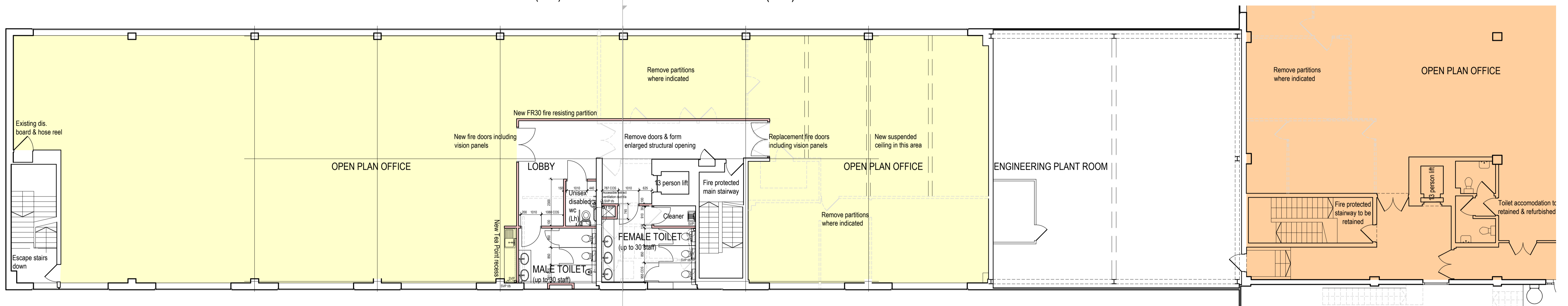


PROPOSED SECOND FLOOR OFFICE PLAN - Net Internal Area (NIA) 464m<sup>2</sup>

Gross Internal Area (GIA) 577m<sup>2</sup>

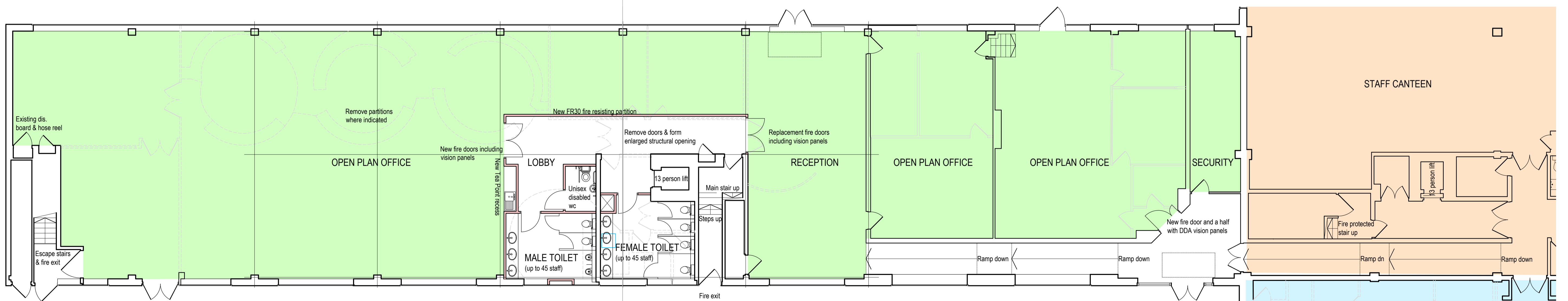
For continuation - see drawing 4159-SK020



PROPOSED FIRST FLOOR OFFICE PLAN - Net Internal Area (NIA) 467m<sup>2</sup>

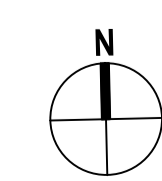
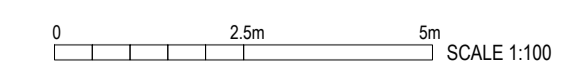
Gross Internal Area (GIA) 576m<sup>2</sup>

For continuation - see drawing 4159-SK020



PROPOSED GROUND FLOOR OFFICE PLAN - Net Internal Area (NIA) 568m<sup>2</sup>

Gross Internal Area (GIA) 724m<sup>2</sup>



**pHp architects**

THE HOUGHTON CENTRE, PLOTS 78 & 78  
SALTHOUSE ROAD, BRACKMILLS ESTATE  
NORTHAMPTON for GOODMAN

The Old Rectory Rectory Lane Milton Malsor		
NORTHAMPTON NN7 3AQ		
t: +44 (0)1604 858916 f: +44 (0)1604 859123		<b>SKETCH LAYOUT</b>
www.peter-haddon.com		
Issue Purpose:	Date/Checked	
Drawn by: RH	Checked by:	
Scale @ A1: 1:100	Date:	FEB 2016
CAD ref: SK010	Dwg no.: SK019	Rev: P3
Copyright reserved. Dimensions to be checked on site. Discrepancies to be reported before proceeding.		